



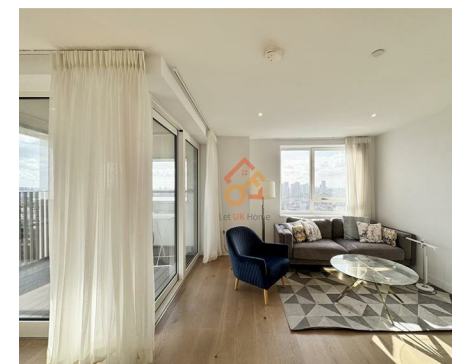
Let **UK** Home

**2 Bedrooms**

**Flat**

**Located in London**

**£3,800 Per Month**



[info@letukhome.co.uk](mailto:info@letukhome.co.uk)

<https://www.letukhome.co.uk/>

01795 358 886



# 143 Walworth Road London

SE17 1FZ



Let UK Home are excited to offer this spectacular two bedroom apartment in the heart of Walton Heights part of the Elephant Park development.

This property comprises a large bright open plan kitchen and living room leading to a large private balcony with great views, two double bedrooms with wardrobes (master en-suite), a large family sized bathroom, and ample storage. A virtual viewing is provided.

Residents of this exceptional development will have exclusive use of the gym and residents lounge. Furthermore, residents will also benefit from a concierge and an unrivalled selection of shops, bars, restaurants, leisure facilities and beautiful courtyards.

Walton Heights is located on the south bank of the River Thames, within walking distance of all major shopping streets. There are all kinds of delicious food, gyms, medical centers, Elephant and Castle shopping centre nearby. Tesco and Sainsbury's are within walking distance, and there are Chinese grocery stores downstairs. Elephant & Castle station is just a few minutes walk away.

# 143 Walworth Road London

£3,800 Per Month

- 13th Floor
- 24h Security
- Residents Lounge
- Virtual Viewing Available

- Concierge Service
- The Gym
- Co-working Space
- EPC Rating: B



公寓3		
室内面积	77.6平方米	835.3平方英尺
室外面积	7.7平方米	83.2平方英尺
客厅/厨房/餐厅	5.0米 x 6.6米	16.5英尺 x 21.6英尺
主卧	3.4米 x 3.6米	11.1英尺 x 11.7英尺
次卧	4.5米 x 2.9米	14.8英尺 x 9.4英尺
阳台	2.6米 x 2.7米	8.5英尺 x 9.0英尺



Let **UK** Home

3F 2 Eastbourne Terrace  
Paddington  
London  
W2 6LG

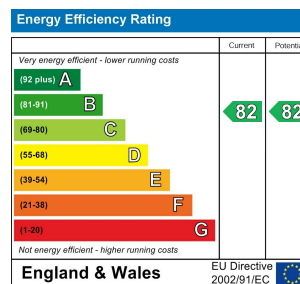
01795 358 886

info@letukhome.co.uk

**Council Tax Band: E**

**Local Authority:**

Agents Note: Whilst every care has been taken to prepare these particulars, they are for guidance purposes only. All measurements are approximate and are for general guidance purposes only and whilst every care has been taken to ensure their accuracy, they should not be relied upon and potential buyers/tenants are advised to recheck the measurements.



<https://www.letukhome.co.uk/>